



09

YHZS

Mobile Concrete Batching Plant

YHZS系列移动混凝土搅拌站

产品简介

Brief Introduction

DASION mobile concrete batching plant is new and unique structure, compact and simple, covers small area, simple installation, high degree of automation, performance has a number of new technologies, on lessons at domestic and foreign experience.

道生移动混凝土搅拌站采用新型设计，结构紧凑简单，占地面积小，运输、拆卸、安装便捷、操作灵敏度度高，适用于经常转场的混凝土工地施工。

技术特点

Technical Features

- 1.Rapid and easily to assemble and disassemble, conveniently to transport. All of the cable connection don't need to be unloaded, except the external equipment such as screw conveyor and cement silo, etc.
- 2.The performance of mixing is perfect. It adopts twin-shaft concrete mixer to make the concrete mixing equally in shortest time. For different mixture radios of dry concrete, semi-dry concrete, or plastic concrete, it can make the mixing well.
- 3.Top-quality configuration, high reliability, accurate measurement, easy operation. The main electric components on concrete mixer reducers, scale load cells and control system are imported brands, which can reduce the failure rate and increase the scale accurate of the equipment.

1. 快速简便的拆卸和安装，方便运输。除了外接设备例如螺旋输送机和水泥仓以外，所有电缆也无需拆下重装；
2. 搅拌性能出色，采用双卧轴主机，可以在短时间内使混凝土搅拌均匀。可搅拌多种配方的混凝土，例如干性、半干性、塑性混凝土等；
3. 整站配置高、质量稳定、计量精确、操作简单。搅拌机用减速机、称重传感器和控制系统电子元件都采用进口品牌，减少故障率，提高配料精度和搅拌质量。

工作原理

Working principle

Mobile concrete batching plant is consist of aggregate loading system, electric auto-measurement system. The core of the whole system is the auto-measurement controlled by computer, which will operate the feeding quantity of cement, sand, gravel, keep the mixture ratio of concrete strictly, to ensure the production quality. The system works by high-tech of mechanical and electrical integration, establish the auto-running of electronic weighing and feeding trolley and chain procedures. It will also effective organized the generally used machinery in the construction enterprises, such as the concrete mixer, engineering vehicles, belt conveyors, etc, play their best performance.

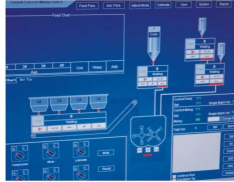
整个移动站由物料计量系统、电子称量系统、搅拌系统、行走系统等组成。核心系统是全自动控制系统，操作整站设备精确喂料，保证混凝土生产。



Main configuration and parameters

主要配置与参数

型号Model	YHZS25	YHZS35	YHZS50	YHZS60	YHZS75
生产率Capacity	25m³/h	35m³/h	50m³/h	60m³/h	75m³/h
最大拖行速度 Max. dragging speed:	40km/h				
卸料高度 Discharging height	3800mm				
售后服务 After-sale service	Erection & commissioning, operator training接线、调试、培训				
质保 Warranty	12 months after erection安装后12个月				
Concrete mixer	JS500	JS750	JS1000	YJS1000	YJS1500
Aggregate batching machine	PLD800	PLD1200	PLD1600	PLD2400	PLD2400
Aggregate feeding to mixer by	Skirt-side Belt conveyor				
Measurement precision	±2%	±2%	±2%	±2%	±2%
称量系统 Weighing system	Water, Cement, Fly-ash, Additive水、水泥、粉煤灰、添加剂				
称量精度 Weighing precision	±1%				
气路系统 Air system	Air compressor, etc空压机等				
可拖行底盘 Dragging chassis	Drag rod & Leading steering, Front/Back axle & shock absorption, Back wheel, Outrigger 拉杆和转向系统，前后轴及减震，后轮，支架等				
水泥仓和螺旋输送机 Cement storage and feeding system	Optional parts选配件				
螺旋输送机直径 Screw conveyor diameter	Ø219/273mm				
水泥仓 Cement silo capacity	30t/50t/100t		50t/100t		



www.cndasion.com

Mobile Concrete Batching Plant